

Philippe PASTOR, *Avec le Temps*, mixed media on canvas, 182x309cm, 2014 (Courtesy of the artist / Picture : François Fernandez)

PHILIPPE PASTOR

Terre & Métamorphoses

Until 6 September 2019

Monaco Modern'Art gallery, in collaboration with the association Art & Environnement, presents a selection of monumental paintings by Philippe Pastor together with original sculptures of *The Burned Trees*. These sensitive pieces, conceived as a tribute to Nature, also denounce the current environmental issues, in the era of what some call the Anthropocene.

Three large paintings of the series *Avec le Temps*, gathered for the occasion, form lyrical abstract compositions which evoke the unleashing of the elements. Natural chaos, storms, tornadoes, these paintings refer here to recent tsunamis and hurricanes. The year 2018 was particularly marked by these disasters. Florence and Michael in the North Atlantic caused a lot of damage in the United States, while in the Pacific Northwest, powerful typhoons killed many people, especially in the Philippines.

The lines of force that cross the canvas, highlight here the process of creation of the artist, who works on large surfaces, on which he applies, throws or delicately affixes the material. Leaning over the canvas, « in » the canvas, Philippe Pastor apprehends it in the manner of the American abstract expressionists working with *action painting*. He becomes one with the matter. The lines and the energy that emanate from them are similar to the energetic fluxes of the Earth, to the meteorological flows subjected to increasingly contrasted climatic changes.

Avec le Temps also bears in its title a very important notion in the work of the artist, that of « time ». The time of creation, of the artist's gesture, but also the natural time of drying multiple layers, the time of alteration and patina. The matter gets transformed into earth crust, made up of multiple stratas, patiently created by the artist and sometimes crystallized by fire. This electric matter, which vibrates on the surface of the canvas, owes its intensity to the choice of materials.

Indeed, Philippe Pastor uses specific natural pigments, especially in the case of the *Monochrome Blue* paintings. This Mediterranean series is elaborated from pigments that the artist fetches in the isolated villages of Mount Atlas in Morocco. He sometimes mixes natural from nature, such as leaves or pine needles, and submits them to the same stratification process. The work from the *Monochrome* series presented here is particularly evocative of this approach. Patiently elaborated from multiple natural elements it evokes an abundant and fertile nature, like the soils of a primary forest.

In dialogue with these large canvases stand the sentinel figures of another wounded nature, *The Burned Trees*. This series of sculptures, initiated in 2003 following the devastating fires of the Massif des Maures, today echoes the recent Californian tragedy. If the first works were directly carved in the trunks of the bruised forest, the latest series offer raw versions, made of calcined wood, such as those recently installed outdoors in the Gulf of Saint-Tropez. In the gallery, the artist proposes here an immutable version, cast in bronze. Thanks to this noble alloy Philippe Pastor offers an admirable reproduction of the details and asperities of the material having undergone the assaults of fire.

The fire, at the origin of dramatic forest destructions, is four times out of five provoked by the hand of Man, whose responsibility is denounced by the artist. This approach, which also can be found in the paintings presented, is more widely related to the particularly critical environmental and social context nowadays, in the era of the Anthropocene, global warming, looting of natural resources, invasive pollution and rising water levels.



Philippe PASTOR, *The Burned Trees*, bronze, 2018
(Courtesy of the artist / Picture : François Fernandez)



Philippe PASTOR, *Les Oiseaux du Malheur*
REF: 14 069 LOM
Mixed media on canvas
182 x 309 cm
2014



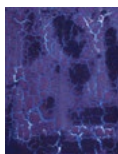
Philippe PASTOR
Bleu Monochrome
REF: 17 014 BM
Mixed media on canvas
natural pigment
40 x 30 cm
2017



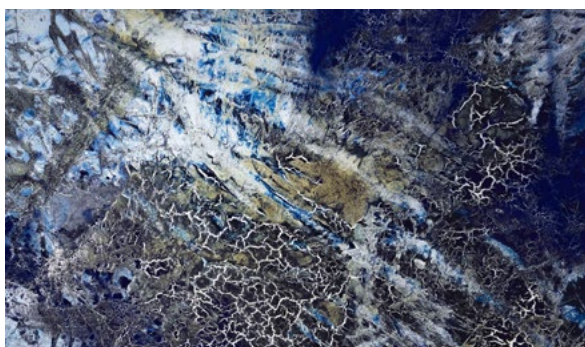
Philippe PASTOR, *Explosion*
REF: 13 028 BM
Mixed media on canvas,
natural pigment and elements
210 x 210 cm
2013



Philippe PASTOR, *Bleu Monochrome*
REF: 14 072 BM
Mixed media on canvas,
natural pigment and elements
200 x 200 cm
2014



Philippe PASTOR
Bleu Monochrome
REF: 17 027 BM
Mixed media on canvas
natural pigment
40 x 30 cm
2017



Philippe PASTOR, *Avec le Temps*
REF: 14 056 ALT
Mixed media on canvas
182 x 309 cm
2014



Philippe PASTOR, *Les Arbres Brûlés*
Edition of 7 + 1AP
Bronze
275 cm high
2018



Philippe PASTOR, *Avec le Temps*
REF: 14 082 ALT
Mixed media on canvas
182 x 309 cm
2014



Philippe PASTOR, *North Pole*
REF: 16 014 NP
Mixed media on canvas
183 x 130 cm
2016



Philippe PASTOR, *Avec le Temps*
REF: 14 055 ALT
Mixed media on canvas
200 x 200 cm
2014



Philippe Pastor was born in 1961 in Monaco.

Committed to environment, Philippe Pastor has developed through his work a personal vision of Nature, translating Man's interaction with the planet. Using living matter, its transformation through time and immediate surroundings, combining soil, pigments, minerals and plants of all kinds, Philippe Pastor represents his vision of life, environmental destruction and Man's involvement in society.

Monaco Modern'Art

27 Avenue Princesse Grace
98 000 Monaco

www.monacomodernart.mc

andrea@monacomodernart.mc

Philippe Pastor

www.philippe-pastor.com



Association Art & Environnement

www.aeamonaco.org

info@aeamonaco.org



Philippe PASTOR, *Explosion*, mixed media on canvas, natural pigment and elements, 210x210cm, 2013 (Courtesy of the artist / Picture : François Fernandez)